



# PENN STATE LAW

---

LL.M. Program



**W**elcome to Penn State Law and one of the best and largest universities in the world. Our LL.M. program is designed to train students to think, communicate, and practice as international legal experts with the confidence to practice anywhere in the world.

We've provided a snapshot of the road ahead for you at Penn State Law. We hope that you will become a part of our community.

<i>Calendar Overview</i>	
<b>PRE-ARRIVAL</b>	
<ul style="list-style-type: none"> <li>• Background reading in U.S. law</li> <li>• Course selection and registration</li> <li>• Visa documents</li> </ul>	<ul style="list-style-type: none"> <li>• Bar exam document preparation (optional)</li> <li>• Housing arrangements</li> </ul>
<b>JULY - EARLY AUGUST</b>	
<ul style="list-style-type: none"> <li>• Intensive Introduction to U.S. Law (optional)</li> <li>• Orientation day (required)</li> </ul>	<ul style="list-style-type: none"> <li>• LLMLW900 - Introduction to U.S. Legal Systems (required)</li> </ul>
<b>AUGUST - DECEMBER</b>	
<ul style="list-style-type: none"> <li>• Four to five courses that may include specialty areas like antitrust, M&amp;A or international business transactions; core courses like legal analysis, writing and research; and cross disciplinary courses with other Penn State graduate programs</li> <li>• Involvement in student organizations, journals, and moot court competitions</li> </ul>	
<b>JANUARY - MAY</b>	
<ul style="list-style-type: none"> <li>• Optional January admission start date</li> <li>• Four to five courses (as above)</li> <li>• Involvement in student organizations, journals, and moot court competitions</li> </ul>	<ul style="list-style-type: none"> <li>• Apply for practical training (optional)</li> <li>• Graduation</li> </ul>
<b>MAY - JULY (OPTIONAL)</b>	
<ul style="list-style-type: none"> <li>• Internship</li> <li>• Bar preparation (commercial class)</li> </ul>	<ul style="list-style-type: none"> <li>• Judicial Observation Program</li> </ul>
<b>AUGUST - DECEMBER (OPTIONAL)</b>	
<ul style="list-style-type: none"> <li>• Additional course work/preparation for U.S. Bar (three-semester program)</li> </ul>	

## LL.M. PROGRAM AT-A-GLANCE

*Your Experience at Penn State Law*



### Flexible Curriculum

The ability to enroll in a variety of courses tailored to your career goals

### Specialized Fields of Study

The ability to concentrate in a specialized area



### Legal English

Intensive legal English communication skills training

### Faculty Scholars

A diverse and accomplished group of scholars and teachers



### Mentoring

LL.M. students participate in law school activities and have classes together with J.D. students.

### Alumni

Access the largest dues-paying alumni organization in the world



### Bar Preparation

Expert counseling and preparation to take a U.S. state bar exam

### Technology

The ability to connect to programs and speakers anywhere in the world



### Interdisciplinary/International Affairs

Collaboration and study with other Penn State graduate schools, including the School of International Affairs

### Applications

Reviewed on an ongoing basis



### Scholarships

Merit-based scholarships awarded to outstanding applicants

### Safe Community

A diverse and safe community home to thousands of U.S. and international students



## FLEXIBLE CURRICULUM

### THE PROGRAM OF STUDY

The master of laws program is a 24-credit, one academic year course of study open to individuals who hold a degree in law from an accredited institution outside of the U.S. Our experienced faculty members work with LL.M. students to develop a course of study that supports their individual career goals. LL.M. students can enroll in any course available to Penn State Law J.D. students and share classes with them.

### THE CURRICULUM

Our rich curriculum affords LL.M. candidates the opportunity to enroll in a variety of diverse courses or to concentrate their studies in any one of the specialized fields of study. LL.M. students are not required to select a specialized field of study. The specialized fields simply illustrate the possible areas of law that students can focus on and help them get to know our renowned faculty members by areas of their expertise.



“I chose Penn State Law because it is a highly ranked university with a global reputation. The faculty and staff here have been helpful with everything, not only with things regarding class work, but also with things that are outside of class. For example, one of the top professors of M&A in the world, Samuel Thompson, helped me with my resume and gave me advice for presenting myself to law firms.”

— Iker Fernandez Avila '14  
Mexico

# SPECIALIZED FIELDS OF STUDY



## PRIMARY FOCUS AREAS:

### **ARBITRATION, MEDIATION AND NEGOTIATION**

It is no longer sufficient for a modern lawyer to know only traditional judicial procedures. Modern lawyers must also represent their clients in negotiation, mediation, administrative adjudication, rule-making, and arbitration.

### **BUSINESS LAW**

Business law courses offer students an opportunity to explore the legal environment of business. Intermediate and advanced level courses provide students with the knowledge, skill, and judgment necessary to practice as advocates and counselors and to develop innovative and ethical solutions to business problems.

### **ANTITRUST**

A global economy demands lawyers trained in a solid understanding of the laws and regulations that focus on restrictive trade and competition between businesses, predatory practices by market-dominant firms and oversight of mergers and acquisitions of large corporations. Penn State has one of the deepest concentrations of antitrust scholars that exist at any American law school.

### **LAW AND INTERNATIONAL AFFAIRS**

Penn State Law is unique in its curricular integration with the graduate School of International Affairs. Students benefit from the unmatched depth in international law and affairs of our two faculties and array of classes. Top law practice today requires a knowledge of the rules and practices that govern transnational affairs, and there is no place better than Penn State Law to gain that knowledge.

### **ENERGY LAW & POLICY**

Penn State Law's energy law and policy field of study comprises the core of the environmental law offerings. Courses are broadly based, and designed to teach students to approach the law of energy policy with consideration for its multi-disciplinary and international nature.

## ADDITIONAL FOCUS AREAS:

### **ADVOCACY AND LITIGATION**

Effective advocacy requires a robust knowledge of the law. Even the sharpest legal minds will not win if they cannot successfully advocate their clients' positions. LL.M. students at Penn State Law learn basic legal communication skills through Legal Analysis Writing and Research and build upon these skills in other courses.

### **CONSTITUTIONAL AND ADMINISTRATIVE LAW**

Few areas of the law are as pervasive as constitutional and administrative law. Penn State Law students interested in this field of study explore some of the most controversial and important issues facing the United States today.

### **LABOR AND EMPLOYMENT LAW**

Labor and employment law explores the legal regulation of employment relationships. The labor and employment law curriculum prepares students to represent a wide variety of clients including labor unions, employees, and employers in both public and private sectors.

### **LAND USE AND ENVIRONMENTAL LAW**

From zoning authorities to climate-change concerns, students at Penn State Law are offered an array of courses designed to expose them to the complexities of environmental law practice.

### **PUBLIC INTEREST LAW**

Penn State Law's public interest law curriculum affords students training in the substance and skills necessary to advocate the civil, political, and economic rights of individuals on a national and international scale.

### **SCIENCE AND TECHNOLOGY LAW**

The intersection of law with science and technology presents a broad range of professional opportunities and challenges. This field includes intellectual property law, regulation of scientific processes, health care law, forensic science, agricultural and environmental science, legal applications of genetic and statistical information, Internet and cyber law, and science-related ethical issues. Students with a scientific background can interact with colleagues from University science and technology disciplines in courses and research.



## LEGAL ENGLISH

Our LL.M. program helps non-native speakers of English attain the high level of legal English language proficiency required in today's global legal practice. Both before the start of the LL.M. program and throughout the LL.M. year, students can build important communication skills for the practice of law.

### SUMMER PROGRAM FOR LAWYERS

To prepare for the LL.M. year, many students enroll in the summer in Penn State Law's optional, three-week legal course, Intensive Introduction to U.S. Law. The course is designed to help non-native English speakers build language and academic skills needed for success in a rigorous U.S. law school program. Students will strengthen their abilities to:

- actively participate in classroom discussions;
- understand U.S. legal materials; and
- write in a clear and effective legal context.

### ADDITIONAL COMMUNICATION SKILLS TRAINING

Lawyers are communicators. Penn State Law's LL.M. program is designed to help our students build the writing and common law analysis skills needed to communicate effectively in English to clients, judges, and other lawyers. We offer specific resources especially tailored for the LL.M. students' needs, including:

- Intensive analysis, writing, and research courses;
- LL.M. Workshop Series;
- Conversation Partner Program;
- Individual consultation with a language specialist;
- Scholarly writing workshops;
- J.D.-led tutoring sessions.

### GRADUATE LANGUAGE CENTER

The Penn State Law Graduate Language Center offers a variety of services to help LL.M. and S.J.D. students become stronger writers and speakers. All LL.M. and S.J.D. students may schedule individual writing conferences with a legal or language tutor to discuss a memorandum, brief, seminar paper, independent study paper, or S.J.D. candidacy paper or dissertation. In addition to individual meetings, the center offers both physical and online libraries with many resources related to writing and oral advocacy in the American legal system.

## FACULTY SCHOLARS



Students in the LL.M. program have access to our complete roster of distinguished faculty — many of them renowned throughout the world for their scholarship and expertise in areas of specific interest to international lawyers. Our faculty members are sensitive to the needs of international students and value the unique perspectives lawyers from other jurisdictions bring to the study of law. Our faculty ensures that your experience is rigorous and engaging and welcomes the opportunity to interact and advise you. Here is a small selection of faculty members who have worked closely with our LL.M. community:



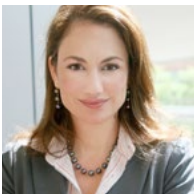
**SAMUEL C. THOMPSON JR.**

Director, Center for the Study of Mergers and Acquisitions; Corporate and international tax, corporate governance, and antitrust scholar



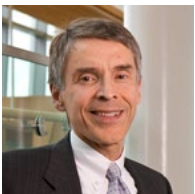
**THOMAS E. CARBONNEAU**

Director, Penn State's Institute of Arbitration Law and Practice; international and domestic arbitration scholar



**CATHERINE A. ROGERS**

Joint appointment as Professor of Ethics, Regulation and the Rule of Law at Queen Mary University of London; scholar of international arbitration and professional ethics



**JOHN E. LOPATKA**

Antitrust, economic analysis of law, and torts scholar

**RANDALL ROBINSON**

Acclaimed human rights advocate and author with interests in U.S. foreign policy towards the Caribbean and Africa; the use of foreign policy to achieve social goals; and racial equity



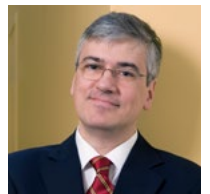
**DAVID H. KAYE**

Legal expert on DNA and other forms of scientific evidence



**PANAGIOTIS TAKIS TRIDIMAS**

Joint appointment as the Chair of European Law at King's College London; financial services law and European Union law scholar



**EILEEN M. KANE**

Holds a Ph.D. in molecular biology; biotechnology, Internet and patent law scholar





## MENTORING ALUMNI

### ACTIVITIES

LL.M. students are fully integrated into the Law School's student life experience. They participate in the Student Bar Association and other student organizations, including the Law School's journals. Select LL.M. students participate on the Moot Court Board and train with a J.D. mentor and a faculty member for the LL.M. International Commercial Arbitration Moot Competition. Through a conversation program that connects LL.M. and J.D. students, LL.M. students have additional opportunities to speak English, learn about American culture, and network with their peers. Two highlights of the year are an annual trip to Washington, D.C., to visit the U.S. Supreme Court and hear oral arguments, and the Penn State Law commencement ceremony, at which one of the speakers is an LL.M. graduate.

### ALUMNI

Graduates of Penn State Law enjoy access to the Penn State Alumni Association, the largest dues-paying alumni organization in the world, with more than 174,379 living members around the globe and chapters in places like London, Beijing, Hong Kong, Brazil, Thailand, Taiwan, and Tokyo.

### *Meet a few of our Alumni*

Rodrigo A. Alas '12  
Head of Litigation and Administrative Affairs  
SABMiller  
El Salvador

Kedian Francis '11  
Partner  
Jordon & Francis, Attorneys-at-Law  
Jamaica

Sakina Ibrahimova '10  
Senior Tax Consultant  
Pricewaterhouse Coopers  
Azerbaijan

Christophe Jolk  
Associate  
CMS Bureau Francis Lefebvre  
Paris, France

Jun Tae Lim '13  
Law Professor  
Dongguk University  
South Korea

Emily Lombardi '11  
Associate  
Chiomenti Studio Legale  
New York, NY

Manmeet Singh '10  
Attorney  
International Civil and Human  
Rights Advocacy (ICHRA)  
New York, NY

Katerina von Smirnow '13  
Associate  
Roedl & Partner  
Germany



# CAREER PLANNING & DEVELOPMENT



## **CAREER PLANNING AND DEVELOPMENT**

LL.M. students can work with a career services professional who provides guidance on the legal employment market. Specializing in helping students identify their interests and strengths, the career professionals at Penn State Law are dedicated to connecting students to the resources and knowledge they need to find legal positions.

## **S.J.D. PROGRAM**

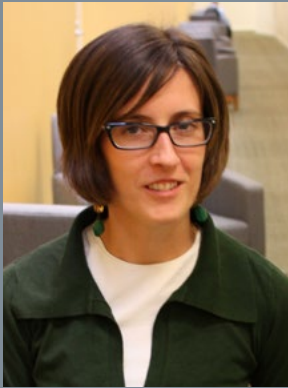
The Penn State Law S.J.D. (Doctor of Juridical Science) degree is intended primarily for lawyers and scholars practicing outside of the U.S. who seek advanced and specialized knowledge in a particular area of law. The course of study required for the degree offers students with outstanding academic or professional credentials an opportunity to pursue sustained, supervised study, and research and writing leading to the production of a dissertation that makes an original and valuable contribution to legal scholarship.

## **OPTION TO TRANSFER TO THE J.D.**

We allow select LL.M. candidates to transfer to the J.D. degree program. Important factors to transfer are excellent English language skills and strong performance in classes taken at Penn State Law. LL.M. candidates interested in this path should work closely with the Penn State Law faculty advisors to choose courses and build their academic program accordingly.

## **JUDICIAL OBSERVATION INTERNSHIP**

Penn State Law's Judicial Observation Internship provides select LL.M. students and recent graduates the opportunity to experience the American legal system firsthand by watching actual cases in the court. Under the supervision of a Penn State Law professor, students spend four weeks observing litigation proceedings to learn about the different advocacy techniques and to see U.S. legal principles in action. They also have the opportunity to hone their legal writing skills by writing a judicial opinion about a case they have observed.



*On meeting with Chief Justice John Roberts at the Supreme Court: “Being able to see in person how one of the most important American institutions works and, even better, having the opportunity to meet the Chief Justice was sincerely one of the most enriching experiences of my life.”*

— EMILY LOMBARDI '11  
ITALY





“The LL.M program is formed in a way that encourages progressive learning. It makes it easy to improve both English skills and the understanding of the legal system in a fast way.”

— OLE KRISTIAN HOLTSMARK '14  
NORWAY





## BAR PREPARATION

Many LL.M. students have the goal of passing a U.S. state bar exam, and we have designed our LL.M. program with that goal in mind. Although for long-term employment in the U.S., a J.D. is essential, the Penn State Law LL.M. program provides students with the curriculum necessary to understand the U.S. legal system at a high level. A student interested in sitting for a bar exam has the freedom to select from a wide array of courses covering all aspects of the American legal system.

Faculty members familiar with the bar exam are available to meet with students to provide academic counseling and help design a course of study. We allow students to take courses that prepare them for the bar. Because fluency in legal English is so important, we provide many opportunities for enhancing communication skills.

### THIRD SEMESTER OPTION

A select number of LL.M. students at Penn State Law apply to stay an additional semester. During this final, third semester, students take more bar-related courses and begin intensive study for the bar exam.

Another benefit of the third semester option is that some students are able to find research positions with law professors or other internship opportunities over the summer between the second and third semester that allows them to gain valuable practical experience.

## TECHNOLOGY / INTERDISCIPLINARY



### TECHNOLOGY

Penn State has invested more than \$130 million in new facilities over the past six years to give its law students a significant advantage. Our facilities have been called “state-of-the-art” because of our technology. Every class at Penn State Law is video recorded. LL.M. students are granted access to the recordings and other class materials like PowerPoint slides. In our courtroom, students were able to observe a Third Circuit judge hear and rule on a last minute death penalty appeal. In our classrooms, students compare constitutional issues with their peers in Canada or Australia. In our library, students have 24/7 access to a vast collection of resources. Plus, our technology allows students to interview with employers all over the world.

### INTERDISCIPLINARY OPPORTUNITIES

LL.M. students have the opportunity for interdisciplinary collaboration and study with other internationally ranked Penn State graduate schools including the Smeal College of Business, Eberly College of Science, and School of International Affairs.

### LAW AND INTERNATIONAL AFFAIRS

The School of International Affairs offers a host of international law and international affairs classes taught by renowned comparative law specialists, former ambassadors, and former high officials of the United Nations. Penn State Law regularly partners with the School of International Affairs to host lectures and events covering key issues in law and international affairs designed to support careers in international organizations where politics and law intersect.



## APPLICATION / SCHOLARSHIPS

### APPLICATION FOR LL.M. ADMISSION

The LL.M. Admissions Office reviews applications on an ongoing basis. While most students seek to enroll in the fall, Penn State Law does offer the option of beginning the LL.M. program in the spring semester (January).

For an application to be considered complete, the LL.M. Admissions Office must receive the following materials:

- A completed application and fee
- Transcripts from all relevant academic institutions attended
- An English proficiency score (88 on TOEFL or 6.5 on IELTS-minimum requirements)
- A personal statement
- A resume
- Two letters of recommendation

Forms and complete application details are available on our website at [pennstatelaw.psu.edu/llm/apply](http://pennstatelaw.psu.edu/llm/apply).

### SCHOLARSHIP OPPORTUNITIES

Penn State Law awards merit-based scholarships to outstanding LL.M. applicants. All applicants are considered for merit-based scholarships and no separate scholarship form is required. Please contact our Admissions Office for a list of possible outside funding sources.

## SAFE COMMUNITY



Penn State is consistently ranked among the top research and teaching institutions in the world. Home to more than 45,000 students and 7,500 international scholars, University Park offers a diverse intellectual community and vast opportunities for LL.M. students to engage in scholarly activities within the Law School and throughout the University community. In addition to extensive scholarly programs, the school is home to some of the most venerated sports teams in the U.S.

State College is consistently ranked as a top place to live in the United States because of its low crime rate, outstanding cultural activities, and wide variety of outdoors activities. Congressional Quarterly has ranked the State College metropolitan area as the second safest in the country. Penn State is located within easy driving distance of Baltimore, Washington, D.C., Philadelphia, Pittsburgh, and New York City, but is a much less expensive city so you can enjoy a year of reasonable rent and a manageable cost of living. You can walk, jog, or bike to class or take the excellent public bus system. State College is often said to have the amenities of a larger urban area but with a small-town feel.



Driving Distances from University Park, PA:

- To Baltimore, MD – 3 hours
- To Philadelphia, PA – 3.5 hours
- To New York City, NY – 4 hours
- To Washington, DC – 4 hours



Office of Admissions  
Lewis Katz Building  
University Park, PA 16802  
814.865.8900  
[pennstatelaw.psu.edu/llm](http://pennstatelaw.psu.edu/llm)  
[llmadmit@pennstatelaw.psu.edu](mailto:llmadmit@pennstatelaw.psu.edu)

---

Photos provided by Ian Bradshaw Photography, Albert Vecerka/ESTO, GradImages Photography, Peter Olson Photography, Dyanna Stupar, Mary Szmolko, and University Marketing.

This publication is available in alternative media on request.

The University is committed to equal access to programs, facilities, admission, and employment for all persons. It is the policy of the University to maintain an environment free of harassment and free of discrimination against any person because of age, race, color, ancestry, national origin, religion, creed, service in the uniformed services (as defined in state and federal law), veteran status, sex, sexual orientation, marital or family status, pregnancy, pregnancy-related conditions, physical or mental disability, gender, perceived gender, gender identity, genetic information, or political ideas. Discriminatory conduct and harassment, as well as sexual misconduct and relationship violence, violates the dignity of individuals, impedes the realization of the University's educational mission, and will not be tolerated. Direct all inquiries regarding the nondiscrimination policy to Dr. Kenneth Lehrman III, Vice Provost for Affirmative Action, Affirmative Action Office, The Pennsylvania State University, 328 Boucke Building, University Park, PA 16802-5901; Email: [kf12@psu.edu](mailto:kf12@psu.edu); Tel 814-863-0471.

---

**CAMPUS SECURITY CRIME STATISTICS:** The Jeanne Clery Disclosure of Campus Security Policy and Campus Crime Statistics Act and Pennsylvania Act of 1988 require that crime statistics for Pennsylvania colleges and universities be made available to applicants upon request. Penn State's combined Annual Security and Annual Fire Safety Report includes statistics for the previous three years concerning reported crimes that occurred on campus, in certain off-campus buildings owned or controlled by the University, and on public property within or immediately adjacent to and accessible from the campus. The report also includes institutional policies concerning campus security, such as those concerning alcohol and drug use, crime prevention, the reporting of crimes, sexual assault, and other matters. You may obtain this information for the Penn State campus to which you are applying by accessing the website at [www.police.psu.edu/clery/](http://www.police.psu.edu/clery/). A printed copy of the report may be obtained by writing to University Police & Public Safety, The Pennsylvania State University, Eisenhower Parking Deck, University Park PA 16802-6703 or by calling 814-865-1864